



Customs Department under the
Ministry of Finance of the
Republic of Lithuania

CUSTOMS CONTROL SYSTEM FOR PRESENTATION OF GOODS

Interface Specification for customs clients

Reference PPMKS-CLIENT-IS-EN

Version 1.00

Volume II Presentation Notification

Table of contents

1	Introduction	4
2	Message flows	5
2.1	Presentation Notification	5
2.1.1	Core flow	5
2.1.2	Amendment.....	7
3	Messages.....	8
3.1	IEG330	9
3.2	IEG347	12
3.3	IEG348	18
3.4	IEG349	23
3.5	Rules	26

List of figures

Figure 1 Presentation Notification 5

1 Introduction

See volume I for full content of introduction and common information for all volumes.

This volume covers definitions of the messages and message flows of the following declarations/notifications:

- Presentation Notification (messages IEG3xx),

2 Message flows

2.1 Presentation Notification

2.1.1 Core flow

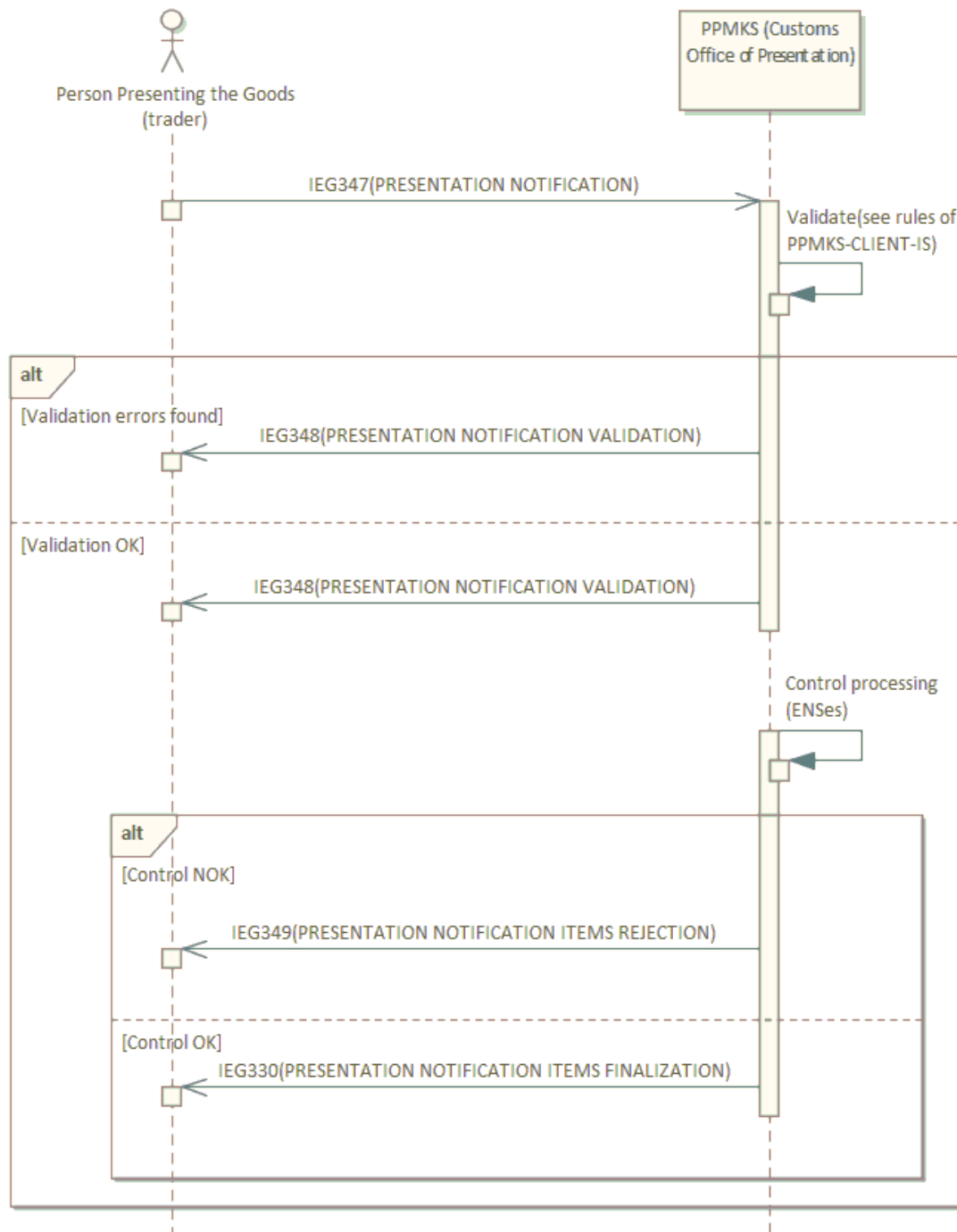


Figure 1 Presentation Notification

Person Presenting the Goods (Trader) prepares Presentation Notification and sends it to Customs Office of Presentation (PPMKS system) as IEG347 message.

PPMKS validates it against the rules defined in PPMKS-CLIENT-IS specification including existence/valid state of pointed ENSes in EU Common Repository (for diagram's clarity not depicted here).

In case of errors found to the trader the rejection is send and flow is finished here. Rejection is sent as IEG348 message with error details.

In case of lack of errors [Validation OK] the flow is continued as follows.

PPMKS registers Presentation Notification and assigns MRN. To the trader acceptance message IEG348 with MRN is sent.

Now on pointed by Presentation Notification ENSes, or their parts if only parts are pointed, the control processing is run. It can be real goods/documents examination or decision that goods are considered satisfactory without real control..

In case of discrepancies found the presentation notification items rejection message IEG349 is prepared and sent to trader - flow is finished here.

Otherwise (no discrepancies), the System prepares the IEG330 finalization message and sends it to trader. Process finishes here.

2.1.2 Amendment

Person Presenting the Goods, till PN finalization, can send amendment. This is IEG347 with MRN instead LRN.

The process is exactly the same as Core flow but MRN is not generated again. If such amendment message is validated by PPMKS with success then it will replace previously sent Presentation Notification.

3 Messages

This page is intentionally empty (each message definition starts from new page).

3.1 IEG330

PRESENTATION NOTIFICATION ITEMS FINALIZATION

This message is sent to the Person Presenting the Goods from Customs Office of Presentations to inform for what Entry Summary Declarations presentation is finalized (and with what result - see ControlResult).

Structure

IEG330	1	-
– Notification	1	-
– – Declaration	1..9999	-
– – – ControlResult	1	-
– – PersonPresentingGoods	1	-
– – CustomsOfficeOfPresentation	1	-
– Signature	0..1	-

Contents

IEG330

Root element of the message	-			1	-
<hr/>					
preparationDateAndTime	-	dateTime	-	R	-
Preparation date and time of the message					
messageIdentification	-	an..40	-	R	R783LT
Message identification					
Unique identifier of the message assigned by sender.					
IEG330.Notification					
Notification	-			1	-
G3 declaration (Presentation Notification) header data level					
<hr/>					
mrn	-	an18	-	R	R780LT
MRN					R788LT
Master Reference Number (MRN) of Presentation Notification.					
IEG330.Notification.Declaration					
Entry Summary Declaration	-			1..9999	-
Fxx declaration header data level					
<hr/>					
mrn	-	an18	-	R	R780LT
MRN					R788LT
Master Reference Number (MRN)					
IEG330.Notification.Declaration.ControlResult					
ControlResult	-			1	-
<hr/>					
code	-	an..2	328COM	R	-
Code					
date	-	date	-	R	-
Date					

description	-	an..1024	-	O	R780LT
Description					

IEG330.Notification.**PersonPresentingGoods**

Person presenting the goods	13 11 000 000			1	-
-----------------------------	---------------	--	--	---	---

identificationNumber	13 11 017 000	an..17	-	R	R790LT R806LT
Identification number					

IEG330.Notification.**CustomsOfficeOfPresentation**

Customs office of presentation	17 09 000 000			1	-
--------------------------------	---------------	--	--	---	---

referenceNumber	17 09 001 000	an8	COL	R	R795LT R804LT
Reference number					

IEG330.**Signature**

Digital signature	-			0..1	-
See chapter "Digital signature".					

3.2 IEG347

PRESENTATION NOTIFICATION

Presentation of goods to customs. See column G3 of UCC-DA, Annex B. It is sent by Person presenting goods to Customs office of presentation.

To change an already sent notification, the MRN must be provided instead of the LRN.

Structure

IEG347	1	-
– Notification	1	-
– – Declaration	1..9999	-
– – – Consignment	1	-
– – – – TransportDocumentMasterLevel	0..1	R803LT
– – – – Carrier	0..1	R805LT
– – – – LocationOfGoods	1	-
– – – – – CustomsOffice	0..1	R807LT
– – – – – GNSS	0..1	R807LT
– – – – – EconomicOperator	0..1	R807LT
– – – – – Address	0..1	R807LT
– – – – – PostcodeAddress	0..1	R807LT
– – – – TransportEquipment	0..9999	-
– – – – Receptacle	0..999	-
– – – – HouseConsignment	0..99	R803LT
– – – – – TransportDocumentHouseLevel	0..1	R803LT
– – PersonPresentingGoods	1	-
– – CustomsOfficeOfPresentation	1	-
– Signature	0..1	R796LT R797LT R798LT

Contents

IEG347

Root element of the message	-			1	-
messageSender	-	an..255	-	R	R785LT R786LT R802LT
Message sender					
Technical data item pointing identification number (XPath notation) of a sender of the message.					
Possible values: /IEG347/Notification/PersonPresentingGoods/identificationNumber					
preparationDateAndTime	-	dateTime	-	R	-
Preparation date and time of the message					
messageIdentification	-	an..40	-	R	R783LT R784LT
Message identification					
Unique identifier of the message assigned by sender.					
IEG347.Notification					
Notification	-			1	-
G3 declaration header data level					
lrn	12 09 000 000	an..22	-	O	R787LT R791LT R800LT R801LT
LRN					
Local Reference Number (LRN) of Presentation Notification.					
mrn	-	an18	-	O	R780LT R788LT R800LT R801LT
MRN					
Master Reference Number (MRN) of Presentation Notification.					
declarationDate	15 06 000 000	dateTime	-	R	R793LT
Declaration date					
Presentation Notification (or its amendment) issuing date and time					

IEG347.Notification.Declaration

Entry Summary Declaration - 1..9999 -

Fxx declaration header data level

mrn	-	an18	-	R	R780LT
MRN					R788LT
Master Reference Number (MRN)					

IEG347.Notification.Declaration.Consignment

Master Consignment data level - 1 -

IEG347.Notification.Declaration.Consignment.TransportDocumentMasterLevel

Transport document 12 05 000 000 0..1 [R803LT](#)

referenceNumber	12 05 001 000	an..70	-	R	R780LT
------------------------	---------------	--------	---	---	------------------------

Reference number

type	12 05 002 000	an4	329COM	R	-
-------------	---------------	-----	--------	---	---

Type

IEG347.Notification.Declaration.Consignment.Carrier

Carrier 13 12 000 000 0..1 [R805LT](#)

identificationNumber	13 12 017 000	an..17	-	R	R790LT
-----------------------------	---------------	--------	---	---	------------------------

Identification number

[R806LT](#)

IEG347.Notification.Declaration.Consignment.LocationOfGoods

Location of goods 16 15 000 000 1 -

typeOfLocation	16 15 045 000	an1	302COM	O	-
-----------------------	---------------	-----	--------	---	---

Type of location

qualifierOfIdentification	16 15 046 000	an1	276COM	O	-
----------------------------------	---------------	-----	--------	---	---

Qualifier of identification

unLocode	16 15 036 000	an..17	353COM	O	R807LT
-----------------	---------------	--------	--------	---	------------------------

UN/LOCODE

authorisationNumber	16 15 052 000 an..35	-	O	R780LT R807LT
----------------------------	----------------------	---	---	--

Authorisation number

additionalIdentifier	16 15 053 000 an..4	-	O	R780LT R808LT
-----------------------------	---------------------	---	---	--

Additional identifier

IEG347.Notification.Declaration.Consignment.LocationOfGoods.**CustomsOffice**

Location of goods, Customs office	16 15 047 000		0..1	R807LT
-----------------------------------	---------------	--	------	------------------------

referenceNumber	16 15 047 001 an8	COL	R	-
------------------------	-------------------	-----	---	---

Customs office reference number

IEG347.Notification.Declaration.Consignment.LocationOfGoods.**GNSS**

Location of goods, GNSS	16 15 048 000		0..1	R807LT
-------------------------	---------------	--	------	------------------------

latitude	16 15 048 049 an..17	-	R	-
-----------------	----------------------	---	---	---

Latitude

longitude	16 15 048 050 an..17	-	R	-
------------------	----------------------	---	---	---

Longitude

IEG347.Notification.Declaration.Consignment.LocationOfGoods.**EconomicOperator**

Location of goods, Economic operator	16 15 051 000		0..1	R807LT
--------------------------------------	---------------	--	------	------------------------

identificationNumber	16 15 051 017 an..17	-	O	R790LT R806LT
-----------------------------	----------------------	---	---	--

Identification number

IEG347.Notification.Declaration.Consignment.LocationOfGoods.**Address**

Location of goods, Address	16 15 018 000		0..1	R807LT
----------------------------	---------------	--	------	------------------------

streetAndNumber	16 15 018 019 an..70	-	R	R780LT
------------------------	----------------------	---	---	------------------------

Street and number

postcode	16 15 018 021 an..17	-	R	R780LT
-----------------	----------------------	---	---	------------------------

Postcode

city	16 15 018 022	an..35	-	R	R780LT
City					

country	16 15 018 020	an2	356COM	R	-
Country code					

IEG347.Notification.Declaration.Consignment.LocationOfGoods.**PostcodeAddress**

Location of goods, Postcode Address	16 15 081 000		0..1	R807LT
-------------------------------------	---------------	--	------	------------------------

postcode	16 15 081 021	an..17	-	R	R780LT
Postcode					

houseNumber	16 15 081 025	an..35	-	O	R780LT
House number					

country	16 15 081 020	an2	356COM	R	-
Country					

IEG347.Notification.Declaration.Consignment.**TransportEquipment**

Transport Equipment	19 07 000 000		0..9999	-
---------------------	---------------	--	---------	---

containerIdentificationNumber	19 07 063 000	an..17	-	R	R794LT
Container identification number					

IEG347.Notification.Declaration.Consignment.**Receptacle**

Receptacle	-		0..999	-
------------	---	--	--------	---

receptacleIdentificationNumber	19 11 000 000	an..35	-	R	R780LT
Receptacle identification number					

IEG347.Notification.Declaration.Consignment.**HouseConsignment**

House Consignment data level	-		0..99	R803LT
------------------------------	---	--	-------	------------------------

sequenceNumber	-	n..5	-	R	R781LT
Sequence number					
As stated in ENS.					

IEG347.Notification.Declaration.Consignment.HouseConsignment.**TransportDocumentHouseLevel**

Transport document	12 05 000 000		0..1	R803LT
--------------------	---------------	--	------	------------------------

referenceNumber	12 05 001 000 an..70	-	R	R780LT
------------------------	----------------------	---	---	------------------------

Reference number

type	12 05 002 000 an4	329COM	R	-
-------------	-------------------	--------	---	---

Type

IEG347.Notification.**PersonPresentingGoods**

Person presenting the goods	13 11 000 000		1	-
-----------------------------	---------------	--	---	---

identificationNumber	13 11 017 000 an..17	-	R	R790LT
-----------------------------	----------------------	---	---	------------------------

Identification number

[R802LT](#)
[R806LT](#)

IEG347.Notification.**CustomsOfficeOfPresentation**

Customs office of presentation	17 09 000 000		1	-
--------------------------------	---------------	--	---	---

referenceNumber	17 09 001 000 an8	COL	R	R795LT
------------------------	-------------------	-----	---	------------------------

Reference number

[R802LT](#)
[R804LT](#)

IEG347.**Signature**

Digital signature	-		0..1	R796LT
-------------------	---	--	------	------------------------

See chapter "Digital signature".

[R797LT](#)
[R798LT](#)

3.3 IEG348

PRESENTATION NOTIFICATION VALIDATION

A message of acceptance or rejection of presentation notification (or its amendment). It is sent by the Customs Office of Presentation to the Person Presenting the Goods.

When Rejection data exist then presentation notification (or its amendment) is rejected. Otherwise presentation notification (or its amendment) is accepted.

Structure

IEG348	1	-
– Notification	1	-
– – Rejection	0..1	-
– – PersonPresentingGoods	1	-
– – CustomsOfficeOfPresentation	1	-
– Warning	0..999	-
– Error	0..999	R809LT
– Signature	0..1	-

Contents

IEG348

Root element of the message	-			1	-
preparationDateAndTime	-	dateTime	-	R	-
Preparation date and time of the message					
messageIdentification	-	an..40	-	R	R783LT
Message identification					
Unique identifier of the message assigned by sender.					
correlationIdentifier	-	an..40	-	R	R783LT
Correlation Identifier					
Value of messageIdentification data item of the IEG347 message to which this message is direct response.					
IEG348.Notification					
Notification	-			1	-
lrn	12 09 000 000	an..22	-	O	R791LT R800LT
LRN					
Local Reference Number (LRN) of Presentation Notification.					
mrn	-	an18	-	O	R780LT R788LT R800LT
MRN					
Master Reference Number (MRN) of Presentation Notification.					
dateAndTimeOfPresentationOfGoods	15 08 000 000	dateTime	-	O	-
Date and time of presentation of the goods					
IEG348.Notification.Rejection					
Rejection	-			0..1	-
rejectionDateAndTime	-	dateTime	-	R	-
Rejection date and time					
rejectionCode	-	an..3	225NOV	R	-
Rejection code					

rejectionReason	-	an..512	-	O	R780LT R809LT
Rejection reason					

IEG348.Notification.**PersonPresentingGoods**

Person presenting the goods	13 11 000 000			1	-
-----------------------------	---------------	--	--	---	---

identificationNumber	13 11 017 000	an..17	-	R	R790LT R806LT
Identification number					

IEG348.Notification.**CustomsOfficeOfPresentation**

Customs office of presentation	17 09 000 000			1	-
--------------------------------	---------------	--	--	---	---

referenceNumber	17 09 001 000	an8	COL	R	R795LT R804LT
Reference number					

IEG348.**Warning**

Warning	-			0..999	-
---------	---	--	--	--------	---

sequenceNumber	-	n..5	-	R	R789LT
Sequence number					

pointer	-	an..512	-	R	R780LT
Pointer					
Pointer to the place where warning occurred.					

code	-	an..2	45LT_49	R	-
Code					
Code of warning					

reason	-	an..10	-	O	R780LT
Reason					
Identifier of rule which produced warning.					

originalAttribute	-	an..512	-	O	R780LT
Original attribute					
Original value the warning concerns.					

description	-	an..1024	-	O	R780LT
--------------------	---	----------	---	---	------------------------

Description

Warning description.

source	-	an..20	243NOV	O	-
---------------	---	--------	--------	---	---

Source

Code of warning source (i.e., code of system or process in the system).

serious	-	boolean	-	O	-
----------------	---	---------	---	---	---

Serious

Serious flag. Value '1' means that warning is serious.

IEG348.Error

Functional error	-			0..999	R809LT
------------------	---	--	--	--------	------------------------

sequenceNumber	-	n..5	-	R	R789LT
-----------------------	---	------	---	---	------------------------

Sequence number

pointer	-	an..512	-	R	R780LT
----------------	---	---------	---	---	------------------------

Pointer

Pointer to the place where error occurred.

code	-	an..2	45LT_49	R	-
-------------	---	-------	---------	---	---

Code

Code of error

reason	-	an..10	-	O	R780LT
---------------	---	--------	---	---	------------------------

Reason

Identifier of rule which produced error.

originalAttribute	-	an..512	-	O	R780LT
--------------------------	---	---------	---	---	------------------------

Original attribute

Original value the error concerns.

description	-	an..1024	-	O	R780LT
--------------------	---	----------	---	---	------------------------

Description

Error description.

source	-	an..20	243NOV	O	-
---------------	---	--------	--------	---	---

Source

Code of error source (i.e., code of system or process in the system).

IEG348 . Signature			
Digital signature	-	0..1	-
See chapter "Digital signature".			

3.4 IEG349

PRESENTATION NOTIFICATION ITEMS REJECTION

This message is sent to the Person Presenting the Goods from Customs Office of Presentation to inform that pointed in IEG347 particular Entry Summary Declarations cannot be presented (e.g. goods does not exist).

Structure

IEG349	1	-
– Notification	1	-
– – Declaration	1..9999	-
– – – Rejection	1	-
– – PersonPresentingGoods	1	-
– – CustomsOfficeOfPresentation	1	-
– Signature	0..1	-

Contents

IEG349

Root element of the message	-			1	-
-----------------------------	---	--	--	---	---

preparationDateAndTime	-	dateTime	-	R	-
Preparation date and time of the message					

messageIdentification	-	an..40	-	R	R783LT
Message identification					
Unique identifier of the message assigned by sender.					

IEG349.Notification

Notification	-			1	-
--------------	---	--	--	---	---

mrn	-	an18	-	R	R780LT R788LT
MRN					
Master Reference Number (MRN) of Presentation Notification.					

IEG349.Notification.Declaration

Entry Summary Declaration	-			1..9999	-
Fxx declaration header data level					

mrn	-	an18	-	R	R780LT R788LT
MRN					
Master Reference Number (MRN)					

IEG349.Notification.Declaration.Rejection

Rejection	-			1	-
-----------	---	--	--	---	---

rejectionDateAndTime	-	dateTime	-	R	-
Rejection date and time					

rejectionCode	-	an..3	225NOV	R	-
Rejection code					

rejectionReason	-	an..512	-	O	R780LT R809LT
Rejection reason					

IEG349.Notification.**PersonPresentingGoods**

Person presenting the goods	13 11 000 000		1	-
identificationNumber	13 11 017 000 an..17	-	R	R790LT R806LT
Identification number				

IEG349.Notification.**CustomsOfficeOfPresentation**

Customs office of presentation	17 09 000 000		1	-
referenceNumber	17 09 001 000 an8	COL	R	R795LT R804LT
Reference number				

IEG349.**Signature**

Digital signature	-		0..1	-
See chapter "Digital signature".				

3.5 Rules

R780LT

#SchemaValidated

Value of this data item (free text item) cannot:

- be empty,
- contain only white spaces (like spaces, tabulators),
- contain white spaces at the beginning or at the end of the text.

Value of this data item cannot be empty.

R781LT

#SchemaValidated

Value of this data item must be greater than 0.

Value of this data item must be greater than zero.

R783LT

#SchemaValidated

messageIdentification data item cannot be empty and may contain only the following characters:

'0-9', 'A-Z', 'a-z', '- '.

Message identification data item cannot be empty and may contain only the following characters:

'0-9', 'A-Z', 'a-z', '- '.

R784LT

#Contextual

messageIdentification data item must be unique among messages of the same type sent to the system by the same sender (identified by identificationNumber pointed by the messageSender data item).

Message identification data item must be unique among messages of the same type sent to the system by the same sender (identified by identification number pointed by the message sender data item).

R785LT

#SchemaValidated

Possible XPath values of this data item are defined by enumerations in particular schema definitions e.g., /IEG347/Notification/PersonPresentingGoods/identificationNumber.

Possible values of this data item are defined in particular schema definitions.

R786LT

#Contextual

identificationNumber pointed by messageSender has to be provided.

Message sender must be declared.

R787LT

#Contextual

Notification.lrn of notification message together with message sender identificationNumber (see messageSender data item) cannot point to existing notification of the same type (i.e., notification LRN per sender and notification type must be unique).

LRN number of notification must be unique.

R788LT

There must be a valid control digit in the mrn data item.

The MRN must have a valid control digit.

R789LT

Each sequenceNumber is unique for the Data group it belongs to. The sequence numbers shall be sequential, starting from '1' for the first iteration of the Data group and increasing by '1' for each iteration.

Sequence numbers must be unique sequential numbers in collection starting from 1.

R790LT

#SchemaValidated

EORI/TCUIN value should comply with the following pattern: [A-Z]{2}[\x21-\x7E]{1,15}

It means:

- first two chars from the ASCII table scope "A".."Z"
- next chars (at least 1, maximum 15) from the ASCII table scope "!".."~"

EORI/TCUIN value should comply with the following pattern: first two chars from "A".."Z" scope, next chars (at least 1, maximum 15) from the wider scope: "!".."~"

R791LT

#SchemaValidated

Declaration.lrn cannot be empty and may contain only the following characters:

'0-9', 'A-Z', 'a-z', '-', '_', ':', '/', '\'

*LRN cannot be empty and may contain only the following characters:
'0-9', 'A-Z', 'a-z', '-', '_', ':', '/', '\'.*

R793LT

Pointed date/time must be earlier than or equal to current date/time.

Pointed date/time must be earlier than or equal to current date/time.

R794LT

#SchemaValidated

containerIdentificationNumber may contain only the following characters: '0-9', 'A-Z', 'a-z'.

*Container number may only contain numbers from '0' to '9', capital letters from 'A' to 'Z'
and lowercase letters from 'a' to 'z'.*

R795LT

#SchemaValidated

First two characters of customs office referenceNumber can be only 'LT'.

Only "LT" Lithuanian customs office is acceptable.

R796LT

#Contextual

The content of the message must be integral with the digital signature

The content of the message must be integral with the digital signature.

R797LT

#Contextual

The person who signed the message must have the right to act for the sender of the message

Remarks:

- Person is identified by thumbprint of digital signature.
- Message sender is pointed by messageSender data item of the root message element.
- This rule is not relevant for messages sent from PPMKS Portal.

*The person who signed the message must be authorised in BAP (Common User Management Portal) to act
on behalf of Declarant/Representative who sent the message.*

R798LT

#Contextual

Signature is required for electronic communication

A digital signature is required for electronic communication.

R800LT

IF Notification.mrn is declared THEN
 Notification.lrn cannot be used
ELSE
 Notification.lrn is required

*When MRN is not provided (notification is sent the first time) then LRN is required.
When MRN is provided (notification amendment case) then LRN cannot be used.*

R801LT

#Contextual

IF Notification.lrn is provided THEN
 Notification.lrn (together with message sender identifier see messageSender data item)
 cannot point to existing and not rejected Presentation Notification
ELSE IF Notification.mrn is provided
 Notification.mrn must point to existing notification which is not finalized yet

*LRN of particular notification type must be unique per notification sender.
MRN must point to existing and not finalized notification.*

R802LT

#Contextual

IF Notification.mrn is provided (amendment case) THEN
 the following data must be exactly the same as in pointed notification:
 - messageSender,
 - PersonPresentingGoods.identificationNumber
 - CustomsOfficeOfPresentation.referenceNumber
 The rest of message data will update pointed notification.

The following message data, must be exactly the same as in pointed notification:
- message sender,
- identification number of person presenting goods,
- reference number of presentation customs office.

R803LT

- Declaration.Consignment.TransportDocumentMasterLevel cannot be used

- Declaration.Consignment.HouseConsignment with TransportDocumentHouseLevel are required

*During ICS2 Release 1 transport document cannot be used on consignment level.
During ICS2 Release 1 transport document on house consignment level is required.*

R804LT

Notification.CustomsOfficeOfPresentation.referenceNumber must exist in correlation code list 94LT (code1) with role (code2) equals to "9IC" (see code list 56).

Customs office of presentation must have "presentation office (ICS2)" role.

R805LT

IF Consignment.HouseConsignment.TransportDocumentHouseLevel.type = "N703" (House air waybill),
"N740" (Airway bill general) THEN
 Consignment.Carrier is required

For transport documents: House air waybill (N703) or Airway bill general (N740) Carrier is required.

R806LT

#Contextual

Only EORI number is acceptable.

Remark
EORI is checked in MPR system.

Only EORI number is acceptable.

R807LT

IF LocationOfGoods.qualifierOfIdentification = 'U' (UN/LOCODE) THEN
 LocationOfGoods.unLocode is required
 AND
 LocationOfGoods.authorisationNumber
 LocationOfGoods.CustomsOffice
 LocationOfGoods.GNSS
 LocationOfGoods.EconomicOperator
 LocationOfGoods.Address
 LocationOfGoods.PostcodeAddress cannot be used
ELSE IF LocationOfGoods.qualifierOfIdentification = 'Y' (Authorisation number) THEN
 LocationOfGoods.authorisationNumber is required
 AND
 LocationOfGoods.unLocode

```
LocationOfGoods.CustomsOffice
LocationOfGoods.GNSS
LocationOfGoods.EconomicOperator
LocationOfGoods.Address
LocationOfGoods.PostcodeAddress cannot be used
ELSE IF LocationOfGoods.qualifierOfIdentification = 'V' (Customs office identifier) THEN
    LocationOfGoods.CustomsOffice is required
    AND
    LocationOfGoods.unLocode
    LocationOfGoods.authorisationNumber
    LocationOfGoods.GNSS
    LocationOfGoods.EconomicOperator
    LocationOfGoods.Address
    LocationOfGoods.PostcodeAddress
    LocationOfGoods.ContactPerson cannot be used
ELSE IF LocationOfGoods.qualifierOfIdentification = 'W' (GNSS coordinates) THEN
    LocationOfGoods.GNSS is required
    AND
    LocationOfGoods.unLocode
    LocationOfGoods.authorisationNumber
    LocationOfGoods.CustomsOffice
    LocationOfGoods.EconomicOperator
    LocationOfGoods.Address
    LocationOfGoods.PostcodeAddress cannot be used
ELSE IF LocationOfGoods.qualifierOfIdentification = 'X' (EORI number) THEN
    LocationOfGoods.EconomicOperator is required
    AND
    LocationOfGoods.unLocode
    LocationOfGoods.authorisationNumber
    LocationOfGoods.CustomsOffice
    LocationOfGoods.GNSS
    LocationOfGoods.Address
    LocationOfGoods.PostcodeAddress cannot be used
ELSE IF LocationOfGoods.qualifierOfIdentification = 'Z' (Address) THEN
    LocationOfGoods.Address is required
    AND
    LocationOfGoods.unLocode
    LocationOfGoods.authorisationNumber
    LocationOfGoods.CustomsOffice
    LocationOfGoods.GNSS
    LocationOfGoods.EconomicOperator
    LocationOfGoods.PostcodeAddress cannot be used
ELSE IF LocationOfGoods.qualifierOfIdentification = 'T' (Postal code) THEN
    LocationOfGoods.PostcodeAddress is required
    AND
    LocationOfGoods.unLocode
    LocationOfGoods.authorisationNumber
    LocationOfGoods.CustomsOffice
    LocationOfGoods.GNSS
    LocationOfGoods.EconomicOperator
    LocationOfGoods.Address cannot be used
```

When location of goods by qualifier of identification points to UN/LOCODE then it is required and other location of goods data: authorisation number, customs office, GNSS coordinates, economic operator, address or postal address cannot be used.

When location of goods by qualifier of identification points to authorisation number then it is required and other location of goods data: UN/LOCODE, customs office, GNSS coordinates, economic operator, address or postal address cannot be used.

When location of goods by qualifier of identification points to customs office then it is required and other location of goods data: UN/LOCODE, authorisation number, GNSS coordinates, economic operator, address or postal address cannot be used.

When location of goods by qualifier of identification points to GNSS coordinates then they are required and other location of goods data: UN/LOCODE, authorisation number, customs office, economic operator, address or postal address cannot be used.

When location of goods by qualifier of identification points to economic operator then it is required and other location of goods data: UN/LOCODE, authorisation number, customs office, GNSS coordinates, address or postal address cannot be used.

When location of goods by qualifier of identification points to address then it is required and other location of goods data: UN/LOCODE, authorisation number, customs office, GNSS coordinates, economic operator or postal address cannot be used.

When location of goods by qualifier of identification points to postal address then it is required and other location of goods data: UN/LOCODE, authorisation number, customs office, GNSS coordinates, economic operator or address cannot be used.

R808LT

IF LocationOfGoods.EconomicOperator OR LocationOfGoods.authorisationNumber is provided THEN
 LocationOfGoods.additionalIdentifier can be used
ELSE
 LocationOfGoods.additionalIdentifier cannot be used

For location of goods other then managed by economic operator or defined by authorisation the additional identifier cannot be used.

R809LT

IF Rejection.rejectionCode = '999' (Other) THEN
 at least Rejection.rejectionReason OR Error (where relevant) is required

When rejection code points "Other" (999) then at least rejection reason or error data are required.