



Customs Department under the  
Ministry of Finance of the  
Republic of Lithuania

# **CUSTOMS CONTROL SYSTEM FOR PRESENTATION OF GOODS**

**Interface Specification for customs clients**

**Reference** PPMKS-CLIENT-IS-EN

**Version** 1.00

**Volume III** ENS Support

Table of contents

1	Introduction .....	4
2	Message flows .....	5
2.1	ENS Query .....	5
2.1.1	Query flow .....	5
3	Messages.....	7
3.1	ENSQRY .....	8
3.2	ENSRSP .....	11
3.3	Rules.....	57

List of figures

Figure 1 Presentation Notification ..... 5

# 1 Introduction

See volume I for full content of introduction and common information for all volumes.

This volume covers definitions of the messages and message flow related to query of Entry Summary Declaration (ENS).

## 2 Message flows

### 2.1 ENS Query

#### 2.1.1 Query flow

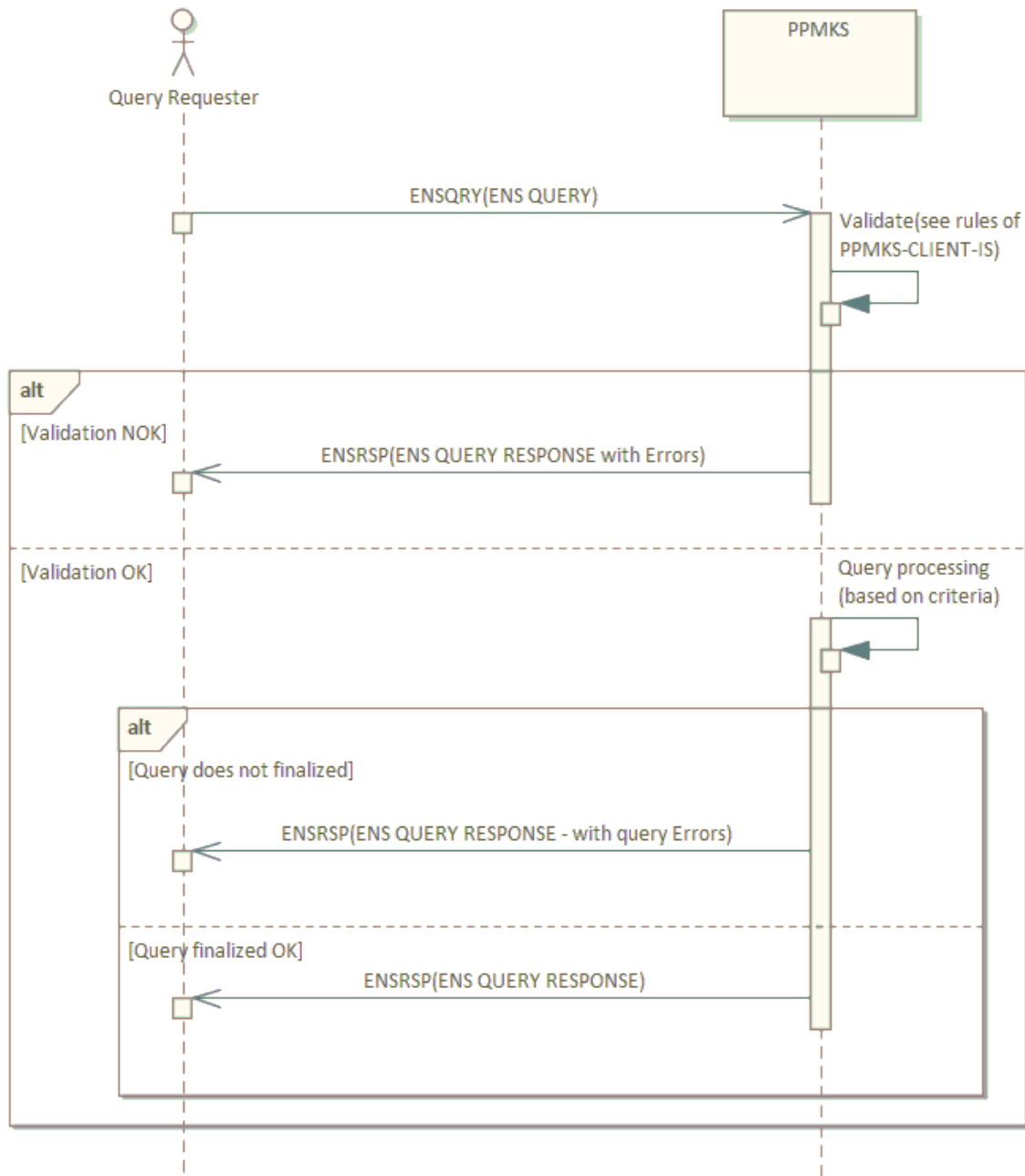


Figure 1 Presentation Notification

Query Requester (Trader) prepares ENS QUERY request message and sends it to PPMKS system.  
PPMKS validates it against the rules defined in PPMKS-CLIENT-IS specification.

In case of errors found (see [Validation NOK]) to the trader the rejection message is sent (ENS QUERY RESPONSE with Error(s) info).

After successful validation (see [Validation OK]) the flow is continued as follows.

PPMKS looks for queried ENS in its own database or when ENS does not exist DG TAXUD Common Repository is queried.

If query processing due to some reasons fails (see [Query does not finalized] e.g. timeout in access to Common Repository) then ENS QUERY RESPONSE with Error(s) info is returned.

Otherwise(see [Query finalized OK]), the System return the real query result (it can be also info that ENS does not exist).

## 3 Messages

This page is intentionally empty (each message definition starts from new page).

### 3.1 ENSQRY

#### ENS QUERY

This message allows the trader (Query Requester) ask the PPMKS system whether particular Entry Summary Declaration (ENS) identified by MRN of master/house consignment or master/house consignment transport document exists and, if exists, retrieve its data.

When identification number (EORI) of Query Requester is not mentioned in ENS data (i.e., any of <trader>.identificationNumber structure) then ENS data are not returned.

#### Structure

ENSQRY	1	-
- Query	1	-
- - TransportDocument	0..1	R810LT
- QueryRequester	1	-
- Signature	0..1	R796LT R797LT R798LT



## Contents

### ENSQRY

Root element of the message	-			1	-
<b>messageSender</b>	-	an..255	-	R	<a href="#">R785LT</a> <a href="#">R786LT</a>
Message sender					
Technical data item pointing identification number (XPath notation) of a sender of the message.					
Possible values: /ENSQRY/QueryRequester/identificationNumber					
<b>preparationDateAndTime</b>	-	dateTime	-	R	-
Preparation date and time of the message					
<b>messageIdentification</b>	-	an..40	-	R	<a href="#">R783LT</a> <a href="#">R784LT</a>
Message identification					
Unique identifier of the message assigned by sender.					

### ENSQRY.Query

Query criteria	-			1	-
<b>mrn</b>	-	an18	-	O	<a href="#">R780LT</a> <a href="#">R788LT</a> <a href="#">R810LT</a>
MRN					
MRN assigned to master or house consignment of ENS (i.e. any of ENS filling making up ENS).					
<b>ENSQRY.Query.TransportDocument</b>					
Transport document	12 05 000 000			0..1	<a href="#">R810LT</a>
Transport document of master or house consignment of ENS (any of ENS filling making up ENS).					
<b>referenceNumber</b>	12 05 001 000	an..70	-	R	<a href="#">R780LT</a>
Reference number					
<b>type</b>	12 05 002 000	an4	329COM	R	-
Type					

ENSQRY.**QueryRequester**

Query Requester	-			1	-
<b>identificationNumber</b>	-	an..17	-	R	<a href="#">R790LT</a> <a href="#">R812LT</a>
Identification number					

ENSQRY.**Signature**

Digital signature	-			0..1	<a href="#">R796LT</a> <a href="#">R797LT</a> <a href="#">R798LT</a>
See chapter "Digital signature".					

## 3.2 ENSRSP

### ENS QUERY RESPONSE

This message is response to ENSQRY.

It contains info if queried ENS exists (see QueryResponse.queryResult data item). When ENS exists and Query Requester is mentioned in ENS data then ENS declaration data are return in Declaration structure. In case of any query errors found the details of them are returned in Error data structure.

For returned ENS declaration (QueryResponse.Declaration structure) all data are set optional and without any rules intentionally - ENS is returned as it is in Commom Repository of DG TAXUD plus state of ENS and each house consignment and full data of traders.

### Structure

ENSRSP	1	-
— QueryResponse	1	-
— — TransportDocument	0..1	R810LT
— — Declaration	0..1	-
— — — SplitConsignment	0..1	-
— — — Declarant	0..1	-
— — — — Address	0..1	-
— — — — Communication	0..9	-
— — — Representative	0..1	-
— — — — Address	0..1	-
— — — — Communication	0..9	-
— — — CustomsOfficeOfFirstEntry	0..1	-
— — — EstimatedActualIndicator	0..1	-
— — — ActiveBorderTransportMeans	0..1	-
— — — CountriesOfRoutingOfMeansOfTransport	0..99	-
— — — Consignment	0..1	-
— — — — AdditionalInformation	0..99	-
— — — — SupportingDocument	0..99	-
— — — — TransportDocumentMasterLevel	0..1	-
— — — — Consignor	0..1	-
— — — — — Address	0..1	-
— — — — — Communication	0..9	-

- - - - Consignee	0..1	-
- - - - - Address	0..1	-
- - - - - Communication	0..9	-
- - - - Carrier	0..1	-
- - - - - Address	0..1	-
- - - - - Communication	0..9	-
- - - - NotifyParty	0..1	-
- - - - - Address	0..1	-
- - - - - Communication	0..9	-
- - - - AdditionalSupplyChainActor	0..99	-
- - - - - Address	0..1	-
- - - - SupplementaryDeclarant	0..99	-
- - - - - Address	0..1	-
- - - - TransportCharges	0..1	-
- - - - PlaceOfDelivery	0..1	-
- - - - PlaceOfLoading	0..1	-
- - - - PlaceOfUnloading	0..1	-
- - - - PlaceOfAcceptance	0..1	-
- - - - TransportEquipment	0..9999	-
- - - - - Seal	0..99	-
- - - - PassiveBorderTransportMeans	0..99	-
- - - - Receptacle	0..9999	-
- - - - <b>HouseConsignment</b>	0..99999	-
- - - - - AdditionalInformation	0..99	-
- - - - - SupportingDocument	0..99	-
- - - - - TransportDocumentMasterLevel	0..1	-
- - - - - TransportDocumentHouseLevel	0..1	-
- - - - - Consignor	0..1	-
- - - - - - Address	0..1	-
- - - - - - Communication	0..9	-

- - - - - Consignee	0..1	-
- - - - - Address	0..1	-
- - - - - Communication	0..9	-
- - - - - Carrier	0..1	-
- - - - - Address	0..1	-
- - - - - Communication	0..9	-
- - - - - NotifyParty	0..1	-
- - - - - Address	0..1	-
- - - - - Communication	0..9	-
- - - - - AdditionalSupplyChainActor	0..99	-
- - - - - Address	0..1	-
- - - - - SupplementaryDeclarant	0..99	-
- - - - - Address	0..1	-
- - - - - AdditionalFiscalReference	0..1	-
- - - - - TransportCharges	0..1	-
- - - - - AdditionsAndDeductions	0..1	-
- - - - - PostalCharges	0..1	-
- - - - - PlaceOfDelivery	0..1	-
- - - - - CountryOfRoutingOfConsignment	0..99	-
- - - - - PlaceOfAcceptance	0..1	-
- - - - - TransportEquipment	0..9999	-
- - - - - Seal	0..99	-
- - - - - PassiveBorderTransportMeans	0..99	-
- - - - - Receptacle	0..9999	-
- - - - - <b>GoodsShipment</b>	0..1	-
- - - - - Seller	0..1	-
- - - - - Address	0..1	-
- - - - - Communication	0..9	-
- - - - - Buyer	0..1	-
- - - - - Address	0..1	-

— — — — — Communication	0..9	-
— — — — — <b>HouseConsignmentItem</b>	0..9999	-
— — — — — AdditionalInformation	0..99	-
— — — — — SupportingDocument	0..99	-
— — — — — AdditionalSupplyChainActor	0..99	-
— — — — — Address	0..1	-
— — — — — PostalValue	0..1	-
— — — — — Packaging	0..99	-
— — — — — DangerousGoods	0..99	-
— — — — — CommodityCode	0..1	-
— — — — — TransportEquipment	0..9999	-
— — — — — Seal	0..99	-
— — — — — PassiveBorderTransportMeans	0..999	-
— — — — <b>ConsignmentItem</b>	0..9999	-
— — — — — AdditionalInformation	0..99	-
— — — — — SupportingDocument	0..99	-
— — — — — AdditionalSupplyChainActor	0..99	-
— — — — — Address	0..1	-
— — — — — Packaging	0..99	-
— — — — — DangerousGoods	0..99	-
— — — — — CommodityCode	0..1	-
— — — — — TransportEquipment	0..9999	-
— — — — — Seal	0..99	-
— QueryRequester	1	-
— Error	0..99	<a href="#">R811LT</a>
— Signature	0..1	-

## Contents

### ENSRSP

Root element of the message	-			1	-
<b>preparationDateAndTime</b>	-	dateTime	-	R	-
Preparation date and time of the message					
<b>messageIdentification</b>	-	an..40	-	R	<a href="#">R783LT</a>
Message identification					
Unique identifier of the message assigned by sender.					
<b>correlationIdentifier</b>	-	an..40	-	R	<a href="#">R783LT</a>
Correlation Identifier					
Value of messageIdentification data item of the ENSQRY message to which this message is direct response.					
<b>ENSRSP.QueryResponse</b>					
Query response data	-			1	-
<b>mrn</b>	-	an18	-	O	<a href="#">R780LT</a> <a href="#">R788LT</a> <a href="#">R810LT</a>
MRN					
MRN assigned to master or house consignment of ENS (i.e. any of ENS filling making up ENS). Value stated in ENSQRY.					
<b>queryResult</b>	-	an..*	-	R	-
Query result					
Possible values: ENS_EXIST, ENS_DOES_NOT_EXIST, QUERY_ERROR					
<b>ENSRSP.QueryResponse.TransportDocument</b>					
Transport document	12 05 000 000			0..1	<a href="#">R810LT</a>
Transport document of master or house consignment of ENS (any of ENS filling making up ENS). Value stated in ENSQRY.					
<b>referenceNumber</b>	12 05 001 000	an..70	-	O	<a href="#">R780LT</a>
Reference number					
<b>type</b>	12 05 002 000	an4	329COM	O	-
Type					

#### ENSRSP.QueryResponse.Declaration

Declaration header data level	-			0..1	-
<b>state</b>	-	an..35	242NOV	O	-
Declaration processing state					
Possible values: NEW, REGISTERED, FINAL, INVALIDATED, INCORRECT, REJECTED, GOODS_PRESENTED, AMENDMENT					
<b>mrn</b>	-	an..35	-	O	-
MRN					
Master Reference Number (MRN)					
<b>specificCircumstanceIndicator</b>	11 04 000 000	an3	372COM	O	-
Specific circumstance indicator					
<b>reEntryIndicator</b>	11 05 000 000	boolean	-	O	-
Re-entry indicator					
<b>declarationDate</b>	15 06 000 000	dateTime	-	O	-
Declaration date					
Document issuing date and time					

#### ENSRSP.QueryResponse.Declaration.SplitConsignment

Split consignment	11 06 000 000			0..1	-
<b>splitConsignmentIndicator</b>	11 06 001 000	boolean	-	O	-
Split consignment indicator					
<b>previousMRN</b>	11 06 002 000	an18	-	O	-
Previous MRN					

#### ENSRSP.QueryResponse.Declaration.Declarant

Declarant	13 05 000 000			0..1	-
<b>name</b>	13 05 016 000	an..70	-	O	-
Name					



<b>identificationNumber</b>	13 05 017 000 an..17	-	O	-
Identification number				

<b>aeoStatus</b>	- an..4	357COM	O	-
AEO status				

#### ENSRSP.QueryResponse.Declaration.Declarant.Address

Declarant's address	13 05 018 000		0..1	-
---------------------	---------------	--	------	---

<b>street</b>	13 05 018 023 an..70	-	O	-
Street				

<b>streetAdditionalLine</b>	13 05 018 024 an..70	-	O	-
Street				

<b>number</b>	13 05 018 025 an..35	-	O	-
Number				

<b>poBox</b>	13 05 018 026 an..70	-	O	-
P.O. box				

<b>postcode</b>	13 05 018 021 an..17	-	O	-
Postcode				

<b>city</b>	13 05 018 022 an..35	-	O	-
City				

<b>subDivision</b>	13 05 018 027 an..35	-	O	-
Sub-division				

<b>country</b>	13 05 018 020 an2	356COM	O	-
Country code				

#### ENSRSP.QueryResponse.Declaration.Declarant.Communication

Communication	13 05 029 000		0..9	-
---------------	---------------	--	------	---

<b>identifier</b>	13 05 029 015 an..512	-	O	-
Identifier				

<b>type</b>	13 05 029 002	an..3	361COM	O	-
Type					

ENSRSP.QueryResponse.Declaration.**Representative**

Representative	13 06 000 000			0..1	-
----------------	---------------	--	--	------	---

---

<b>name</b>	13 06 016 000	an..70	-	O	-
Name					

<b>identificationNumber</b>	13 06 017 000	an..17	-	O	-
Identification number					

<b>status</b>	13 06 030 000	an1	390COM	O	-
Status					

<b>aeoStatus</b>	-	an..4	357COM	O	-
AEO status					

ENSRSP.QueryResponse.Declaration.Representative.**Address**

Address of the representative	13 06 018 000			0..1	-
-------------------------------	---------------	--	--	------	---

---

<b>street</b>	13 06 018 023	an..70	-	O	-
Street					

<b>streetAdditionalLine</b>	13 06 018 024	an..70	-	O	-
Street					

<b>number</b>	13 06 018 025	an..35	-	O	-
Number					

<b>poBox</b>	13 06 018 026	an..70	-	O	-
P.O. box					

<b>postcode</b>	13 06 018 021	an..17	-	O	-
Postcode					

<b>city</b>	13 06 018 022	an..35	-	O	-
City					

<b>subDivision</b>	13 06 018 027	an..35	-	O	-
Sub-division					

<b>country</b>	13 06 018 020	an2	356COM	O	-
Country code					

ENSRSP.QueryResponse.Declaration.Representative.**Communication**

Communication	13 06 029 000			0..9	-
---------------	---------------	--	--	------	---

<b>identifier</b>	13 06 029 015	an..512	-	O	-
Identifier					

<b>type</b>	13 06 029 002	an..3	361COM	O	-
Type					

ENSRSP.QueryResponse.Declaration.**CustomsOfficeOfFirstEntry**

Customs office of first entry	17 07 000 000			0..1	-
-------------------------------	---------------	--	--	------	---

<b>referenceNumber</b>	17 07 001 000	an8	COL	O	-
Reference number					

ENSRSP.QueryResponse.Declaration.CustomsOfficeOfFirstEntry.**EstimatedActualIndicator**

Estimated actual indicator	-			0..1	-
----------------------------	---	--	--	------	---

<b>indicatorString</b>	-	an..*	-	O	-
Indicator string					

<b>indicator</b>	-	boolean	-	O	-
Indicator					

ENSRSP.QueryResponse.Declaration.**ActiveBorderTransportMeans**

Active border transport means	19 08 000 000			0..1	-
-------------------------------	---------------	--	--	------	---

<b>estimatedDateAndTimeOfDeparture</b>	15 01 000 000	dateTime	-	O	-
Estimated date and time of departure					

<b>actualDateAndTimeOfDeparture</b> Actual date and time of departure	15 02 000 000	dateTime	-	O	-
<b>estimatedDateAndTimeOfArrival</b> Estimated date and time of arrival	15 03 000 000	dateTime	-	O	-
<b>actualDateAndTimeOfArrival</b> Actual date and time of arrival	15 05 000 000	dateTime	-	O	-
<b>conveyanceReferenceNumber</b> Conveyance reference number	19 02 000 000	an..17	-	O	-
<b>modeOfTransportAtBorder</b> Mode of transport at the border	19 03 000 000	an1	354COM	O	-
<b>typeOfIdentification</b> Type of identification	19 08 061 000	an2	387COM	O	-
<b>identificationNumber</b> Identification number	19 08 017 000	an..35	-	O	-
<b>nationality</b> Nationality	19 08 062 000	an2	356COM	O	-
<b>typeOfMeansOfTransport</b> Type of means of transport	19 08 067 000	an..4	396COM	O	-

ENSRSP.QueryResponse.Declaration.ActiveBorderTransportMeans.**CountriesOfRoutingOfMeansOfTransport**

Countries of routing of consignment	16 11 000 000			0..99	-
<b>sequenceNumber</b> Sequence number	-	n..5	-	O	-
<b>country</b> Country	16 11 020 000	an2	356COM	O	-

ENSRSP.QueryResponse.Declaration.Consignment

Master Consignment data level	-	0..1	-
<b>referenceNumberUCR</b>	12 08 000 000 an..35	-	O -
Reference number/UCR			
<b>totalGrossMass</b>	18 03 000 000 n..16,6	-	O -
Total gross mass			
<b>containerIndicator</b>	19 01 000 000 boolean	-	O -
Container indicator			

ENSRSP.QueryResponse.Declaration.Consignment.AdditionalInformation

Additional information	12 02 000 000	0..99	-
<b>code</b>	12 02 008 000 an5	358COM	O -
Code			
<b>text</b>	12 02 009 000 an..512	-	O -
Text			

ENSRSP.QueryResponse.Declaration.Consignment.SupportingDocument

Supporting document	12 03 000 000	0..99	-
<b>referenceNumber</b>	12 03 001 000 an..70	-	O -
Reference number			
<b>type</b>	12 03 002 000 an4	351COM	O -
Type			

ENSRSP.QueryResponse.Declaration.Consignment.TransportDocumentMasterLevel

Transport document	12 05 000 000	0..1	-
<b>referenceNumber</b>	12 05 001 000 an..70	-	O -
Reference number			
<b>type</b>	12 05 002 000 an4	329COM	O -
Type			

ENSRSP.QueryResponse.Declaration.Consignment.**Consignor**

Consignor	13 02 000 000			0..1	-
<b>typeOfPerson</b>	13 02 028 000 an1	374COM	O	-	
Type of person					
<b>name</b>	13 02 016 000 an..70	-	O	-	
Name					
<b>identificationNumber</b>	13 02 017 000 an..17	-	O	-	
Identification number					
<b>aeoStatus</b>	- an..4	357COM	O	-	
AEO status					

ENSRSP.QueryResponse.Declaration.Consignment.Consignor.**Address**

Consignor's address	13 02 018 000			0..1	-
<b>street</b>	13 02 018 023 an..70	-	O	-	
Street					
<b>streetAdditionalLine</b>	13 02 018 024 an..70	-	O	-	
Street					
<b>number</b>	13 02 018 025 an..35	-	O	-	
Number					
<b>poBox</b>	13 02 018 026 an..70	-	O	-	
P.O. box					
<b>postcode</b>	13 02 018 021 an..17	-	O	-	
Postcode					
<b>city</b>	13 02 018 022 an..35	-	O	-	
City					
<b>subDivision</b>	13 02 018 027 an..35	-	O	-	
Sub-division					

<b>country</b>	13 02 018 020 an2	356COM	O	-
Country code				

ENSRSP.QueryResponse.Declaration.Consignment.Consignor.**Communication**

Communication	13 02 029 000		0..9	-
---------------	---------------	--	------	---

<b>identifier</b>	13 02 029 000 an..512	-	O	-
Identifier				

<b>type</b>	13 02 029 015 an..3	361COM	O	-
Type				

ENSRSP.QueryResponse.Declaration.Consignment.**Consignee**

Consignee	13 03 000 000		0..1	-
-----------	---------------	--	------	---

<b>typeOfPerson</b>	13 03 028 000 an1	374COM	O	-
Type of person				

<b>name</b>	13 03 016 000 an..70	-	O	-
Name				

<b>identificationNumber</b>	13 03 017 000 an..17	-	O	-
Identification number				

<b>aeoStatus</b>	-	an..4	357COM	O	-
AEO status					

ENSRSP.QueryResponse.Declaration.Consignment.Consignee.**Address**

Consignee's address	13 03 018 000		0..1	-
---------------------	---------------	--	------	---

<b>street</b>	13 03 018 023 an..70	-	O	-
Street				

<b>streetAdditionalLine</b>	13 03 018 024 an..70	-	O	-
Street				

<b>number</b>	13 03 018 025 an..35	-	O	-
Number				

<b>poBox</b> P.O. box	13 03 018 026 an..70	-	O	-
<b>postcode</b> Postcode	13 03 018 021 an..17	-	O	-
<b>city</b> City	13 03 018 022 an..35	-	O	-
<b>subDivision</b> Sub-division	13 03 018 027 an..35	-	O	-
<b>country</b> Country code	13 03 018 020 an2	356COM	O	-

ENSRSP.QueryResponse.Declaration.Consignment.Consignee.**Communication**

Communication	13 03 029 000		0..9	-
<b>identifier</b> Identifier	13 03 029 015 an..512	-	O	-
<b>type</b> Type	13 03 029 002 an..3	361COM	O	-

ENSRSP.QueryResponse.Declaration.Consignment.**Carrier**

Carrier	13 12 000 000		0..1	-
<b>name</b> Name	13 12 016 000 an..70	-	O	-
<b>identificationNumber</b> Identification number	13 12 017 000 an..17	-	O	-
<b>aeoStatus</b> AEO status	- an..4	357COM	O	-



ENSRSP.QueryResponse.Declaration.Consignment.Carrier.**Address**

Carrier's address	13 12 018 000			0..1	-
<b>street</b> Street	13 12 018 023 an..70	-		O	-
<b>streetAdditionalLine</b> Street	13 12 018 024 an..70	-		O	-
<b>number</b> Number	13 12 018 025 an..35	-		O	-
<b>poBox</b> P.O. box	13 12 018 026 an..70	-		O	-
<b>postcode</b> Postcode	13 12 018 021 an..17	-		O	-
<b>city</b> City	13 12 018 022 an..35	-		O	-
<b>subDivision</b> Sub-division	13 12 018 027 an..35	-		O	-
<b>country</b> Country code	13 12 018 020 an2	356COM	O		-

ENSRSP.QueryResponse.Declaration.Consignment.Carrier.**Communication**

Communication	13 12 029 000			0..9	-
<b>identifier</b> Identifier	13 12 029 015 an..512	-		O	-
<b>type</b> Type	13 12 029 002 an..3	361COM	O		-

ENSRSP.QueryResponse.Declaration.Consignment.**NotifyParty**

Notify party	13 13 000 000			0..1	-
<b>typeOfPerson</b>	13 13 028 000 an1	374COM	O	-	
Type of person					
<b>name</b>	13 13 016 000 an..70	-	O	-	
Name					
<b>identificationNumber</b>	13 13 017 000 an..17	-	O	-	
Identification number					
<b>aeoStatus</b>	- an..4	357COM	O	-	
AEO status					

ENSRSP.QueryResponse.Declaration.Consignment.NotifyParty.**Address**

Notify party address	13 13 018 000			0..1	-
<b>street</b>	13 13 018 023 an..70	-	O	-	
Street					
<b>streetAdditionalLine</b>	13 13 018 024 an..70	-	O	-	
Street					
<b>number</b>	13 13 018 025 an..35	-	O	-	
Number					
<b>poBox</b>	13 13 018 026 an..70	-	O	-	
P.O. box					
<b>postcode</b>	13 13 018 021 an..17	-	O	-	
Postcode					
<b>city</b>	13 13 018 022 an..35	-	O	-	
City					
<b>subDivision</b>	13 13 018 027 an..35	-	O	-	
Sub-division					
<b>country</b>	13 13 018 020 an2	356COM	O	-	
Country code					

ENSRSP.QueryResponse.Declaration.Consignment.NotifyParty.**Communication**

Communication	13 13 029 000	0..9	-
---------------	---------------	------	---

<b>identifier</b>	13 13 029 015 an..512	-	O	-
-------------------	-----------------------	---	---	---

Identifier

<b>type</b>	13 13 029 002 an..3	361COM	O	-
-------------	---------------------	--------	---	---

Type

ENSRSP.QueryResponse.Declaration.Consignment.**AdditionalSupplyChainActor**

Additional supply chain actor	13 14 000 000	0..99	-
-------------------------------	---------------	-------	---

<b>name</b>	-	an..70	-	O	-
-------------	---	--------	---	---	---

Name

<b>role</b>	13 14 031 000 an..3	360COM	O	-
-------------	---------------------	--------	---	---

Role

<b>identificationNumber</b>	13 14 017 000 an..17	-	O	-
-----------------------------	----------------------	---	---	---

Identification number

<b>aeoStatus</b>	-	an..4	357COM	O	-
------------------	---	-------	--------	---	---

AEO status

ENSRSP.QueryResponse.Declaration.Consignment.AdditionalSupplyChainActor.**Address**

Additional's supply chain actor address	-	0..1	-
---	---	------	---

<b>street</b>	-	an..70	-	O	-
---------------	---	--------	---	---	---

Street

<b>streetAdditionalLine</b>	-	an..70	-	O	-
-----------------------------	---	--------	---	---	---

Street

<b>number</b>	-	an..35	-	O	-
---------------	---	--------	---	---	---

Number

<b>poBox</b> P.O. box	-	an..70	-	O	-
<b>postcode</b> Postcode	-	an..17	-	O	-
<b>city</b> City	-	an..35	-	O	-
<b>subDivision</b> Sub-division	-	an..35	-	O	-
<b>country</b> Country code	-	an2	356COM	O	-

ENSRSP.QueryResponse.Declaration.Consignment.**SupplementaryDeclarant**

Supplementary declarant	13 15 000 000			0..99	-
-------------------------	---------------	--	--	-------	---

<b>name</b> Name	-	an..70	-	O	-
<b>identificationNumber</b> Identification number	13 15 017 000	an..17	-	O	-
<b>supplementaryFilingType</b> Supplementary filing type	13 15 032 000	an..3	-	O	-
<b>aeoStatus</b> AEO status	-	an..4	357COM	O	-

ENSRSP.QueryResponse.Declaration.Consignment.SupplementaryDeclarant.**Address**

Supplementary declarant's address	-			0..1	-
<b>street</b> Street	-	an..70	-	O	-
<b>streetAdditionalLine</b> Street	-	an..70	-	O	-

<b>number</b>	-	an..35	-	O	-
Number					
<b>poBox</b>	-	an..70	-	O	-
P.O. box					
<b>postcode</b>	-	an..17	-	O	-
Postcode					
<b>city</b>	-	an..35	-	O	-
City					
<b>subDivision</b>	-	an..35	-	O	-
Sub-division					
<b>country</b>	-	an2	356COM	O	-
Country code					

ENSRSP.QueryResponse.Declaration.Consignment.**TransportCharges**

Transport charges	14 02 000 000			0..1	-
-------------------	---------------	--	--	------	---

<b>methodOfPayment</b>	14 02 038 000	an1	395COM	O	-
Method of payment					

ENSRSP.QueryResponse.Declaration.Consignment.**PlaceOfDelivery**

Place of delivery	16 05 000 000			0..1	-
-------------------	---------------	--	--	------	---

<b>unLocode</b>	16 05 036 000	an..17	353COM	O	-
UN/LOCODE					

<b>country</b>	16 05 020 000	an2	356COM	O	-
Country					

<b>location</b>	16 05 037 000	an..35	-	O	-
Location					

ENSRSP.QueryResponse.Declaration.Consignment.**PlaceOfLoading**

Place of loading	16 13 000 000			0..1	-
<b>unLocode</b> UN/LOCODE	16 13 036 000	an..17	353COM	O	-
<b>country</b> Country	16 14 020 000	an2	356COM	O	-
<b>location</b> Location	16 14 037 000	an..35	-	O	-

ENSRSP.QueryResponse.Declaration.Consignment.**PlaceOfUnloading**

Place of unloading	16 14 000 000			0..1	-
<b>unLocode</b> UN/LOCODE	16 14 036 000	an..17	353COM	O	-
<b>country</b> Country	16 14 020 000	an2	356COM	O	-
<b>location</b> Location	16 14 037 000	an..35	-	O	-

ENSRSP.QueryResponse.Declaration.Consignment.**PlaceOfAcceptance**

Place of acceptance	16 16 000 000			0..1	-
<b>unLocode</b> UN/LOCODE	16 16 036 000	an..17	353COM	O	-
<b>country</b> Country	16 16 020 000	an2	356COM	O	-
<b>location</b> Location	16 16 037 000	an..35	-	O	-

ENSRSP.QueryResponse.Declaration.Consignment.**TransportEquipment**

Transport Equipment	19 07 000 000	0..9999	-
---------------------	---------------	---------	---

<b>containerIdentificationNumber</b>	19 07 063 000 an..17	-	O	-
--------------------------------------	----------------------	---	---	---

Container identification number

<b>containerSizeAndType</b>	19 07 064 000 an..10	364COM	O	-
-----------------------------	----------------------	--------	---	---

Container size and type identification

<b>containerPackedStatus</b>	19 07 065 000 an..3	363COM	O	-
------------------------------	---------------------	--------	---	---

Container packed status

<b>containerSupplierType</b>	19 07 066 000 an..3	365COM	O	-
------------------------------	---------------------	--------	---	---

Container supplier type code

<b>numberOfSeals</b>	19 10 068 000 n..4	-	O	-
----------------------	--------------------	---	---	---

Number of seals

ENSRSP.QueryResponse.Declaration.Consignment.TransportEquipment.**Seal**

Seal	19 10 000 000	0..99	-
------	---------------	-------	---

<b>identifier</b>	19 10 015 000 an..20	-	O	-
-------------------	----------------------	---	---	---

Identifier

ENSRSP.QueryResponse.Declaration.Consignment.**PassiveBorderTransportMeans**

Passive border transport means	19 09 000 000	0..99	-
--------------------------------	---------------	-------	---

<b>typeOfIdentification</b>	19 09 061 000 an2	387COM	O	-
-----------------------------	-------------------	--------	---	---

Type of identification

<b>identificationNumber</b>	19 09 017 000 an..35	-	O	-
-----------------------------	----------------------	---	---	---

Identification number

<b>nationality</b>	19 09 062 000 an2	356COM	O	-
--------------------	-------------------	--------	---	---

Nationality

<b>typeOfMeansOfTransport</b>	19 09 067 000 an..4	396COM	O	-
-------------------------------	---------------------	--------	---	---

Type of means of transport

ENSRSP.QueryResponse.Declaration.Consignment.**Receptacle**

Receptacle	-			0..9999	-
------------	---	--	--	---------	---

<b>receptacleIdentificationNumber</b>	19 11 000 000	an..35	-	O	-
Receptacle identification number					

ENSRSP.QueryResponse.Declaration.Consignment.**HouseConsignment**

House Consignment data level	-			0..99999	-
------------------------------	---	--	--	----------	---

<b>sequenceNumber</b>	-	n..5	-	O	-
Sequence number					

<b>mrn</b>	-	an..35	-	O	-
MRN					
Master Reference Number (MRN)					

<b>state</b>	-	an..35	241NOV	O	-
House Consignment state					

<b>referenceNumberUCR</b>	12 08 000 000	an..35	-	O	-
Reference number/UCR					

<b>invoiceCurrency</b>	14 05 000 000	an3	393COM	O	-
Invoice currency					

<b>totalAmountInvoiced</b>	14 06 000 000	n..16,2	-	O	-
Total amount invoiced					

<b>totalGrossMass</b>	18 03 000 000	n..16,6	-	O	-
Total gross mass					

<b>containerIndicator</b>	19 01 000 000	boolean	-	O	-
Container indicator					

ENSRSP.QueryResponse.Declaration.Consignment.HouseConsignment.**AdditionalInformation**

Additional information	12 02 000 000			0..99	-
------------------------	---------------	--	--	-------	---

<b>code</b>	12 02 008 000	an5	358COM	O	-
Code					



<b>text</b>	12 02 009 000	an..512	-	O	-
Text					

ENSRSP.QueryResponse.Declaration.Consignment.HouseConsignment.**SupportingDocument**

Supporting document	12 03 000 000			0..99	-
---------------------	---------------	--	--	-------	---

<b>referenceNumber</b>	12 03 001 000	an..70	-	O	-
Reference number					

<b>type</b>	12 03 002 000	an4	351COM	O	-
Type					

ENSRSP.QueryResponse.Declaration.Consignment.HouseConsignment.**TransportDocumentMasterLevel**

Transport document	12 05 000 000			0..1	-
--------------------	---------------	--	--	------	---

<b>referenceNumber</b>	12 05 001 000	an..70	-	O	-
Reference number					

<b>type</b>	12 05 002 000	an4	329COM	O	-
Type					

ENSRSP.QueryResponse.Declaration.Consignment.HouseConsignment.**TransportDocumentHouseLevel**

Transport document	12 05 000 000			0..1	-
--------------------	---------------	--	--	------	---

<b>referenceNumber</b>	12 05 001 000	an..70	-	O	-
Reference number					

<b>type</b>	12 05 002 000	an4	329COM	O	-
Type					

ENSRSP.QueryResponse.Declaration.Consignment.HouseConsignment.**Consignor**

Consignor	13 02 000 000	0..1	-
<b>typeOfPerson</b>	13 02 028 000 an1	374COM	O -
Type of person			
<b>name</b>	13 02 016 000 an..70	-	O -
Name			
<b>identificationNumber</b>	13 02 017 000 an..17	-	O -
Identification number			
<b>aeoStatus</b>	- an..4	357COM	O -
AEO status			

ENSRSP.QueryResponse.Declaration.Consignment.HouseConsignment.Consignor.**Address**

Consignor's address	13 02 018 000	0..1	-
<b>street</b>	13 02 018 023 an..70	-	O -
Street			
<b>streetAdditionalLine</b>	13 02 018 024 an..70	-	O -
Street			
<b>number</b>	13 02 018 025 an..35	-	O -
Number			
<b>poBox</b>	13 02 018 026 an..70	-	O -
P.O. box			
<b>postcode</b>	13 02 018 021 an..17	-	O -
Postcode			
<b>city</b>	13 02 018 022 an..35	-	O -
City			
<b>subDivision</b>	13 02 018 027 an..35	-	O -
Sub-division			
<b>country</b>	13 02 018 020 an2	356COM	O -
Country code			

ENSRSP.QueryResponse.Declaration.Consignment.HouseConsignment.Consignor.**Communication**

Communication	13 02 029 000		0..9	-
<b>identifier</b> Identifier	13 02 029 000 an..512	-	O	-
<b>type</b> Type	13 02 029 015 an..3	361COM	O	-

ENSRSP.QueryResponse.Declaration.Consignment.HouseConsignment.**Consignee**

Consignee	13 03 000 000		0..1	-
<b>typeOfPerson</b> Type of person	13 03 028 000 an1	374COM	O	-
<b>name</b> Name	13 03 016 000 an..70	-	O	-
<b>identificationNumber</b> Identification number	13 03 017 000 an..17	-	O	-
<b>aeoStatus</b> AEO status	- an..4	357COM	O	-

ENSRSP.QueryResponse.Declaration.Consignment.HouseConsignment.Consignee.**Address**

Consignee's address	13 03 018 000		0..1	-
<b>street</b> Street	13 03 018 023 an..70	-	O	-
<b>streetAdditionalLine</b> Street	13 03 018 024 an..70	-	O	-
<b>number</b> Number	13 03 018 025 an..35	-	O	-

<b>poBox</b> P.O. box	13 03 018 026 an..70	-	O	-
<b>postcode</b> Postcode	13 03 018 021 an..17	-	O	-
<b>city</b> City	13 03 018 022 an..35	-	O	-
<b>subDivision</b> Sub-division	13 03 018 027 an..35	-	O	-
<b>country</b> Country code	13 03 018 020 an2	356COM	O	-

ENSRSP.QueryResponse.Declaration.Consignment.HouseConsignment.Consignee.**Communication**

Communication	13 03 029 000		0..9	-
<b>identifier</b> Identifier	13 03 029 015 an..512	-	O	-
<b>type</b> Type	13 03 029 002 an..3	361COM	O	-

ENSRSP.QueryResponse.Declaration.Consignment.HouseConsignment.**Carrier**

Carrier	13 12 000 000		0..1	-
<b>name</b> Name	13 12 016 000 an..70	-	O	-
<b>identificationNumber</b> Identification number	13 12 017 000 an..17	-	O	-
<b>aeoStatus</b> AEO status	- an..4	357COM	O	-

ENSRSP.QueryResponse.Declaration.Consignment.HouseConsignment.Carrier.**Address**

Carrier's address	13 12 018 000			0..1	-
<b>street</b> Street	13 12 018 023 an..70	-		O	-
<b>streetAdditionalLine</b> Street	13 12 018 024 an..70	-		O	-
<b>number</b> Number	13 12 018 025 an..35	-		O	-
<b>poBox</b> P.O. box	13 12 018 026 an..70	-		O	-
<b>postcode</b> Postcode	13 12 018 021 an..17	-		O	-
<b>city</b> City	13 12 018 022 an..35	-		O	-
<b>subDivision</b> Sub-division	13 12 018 027 an..35	-		O	-
<b>country</b> Country code	13 12 018 020 an2	356COM	O		-

ENSRSP.QueryResponse.Declaration.Consignment.HouseConsignment.Carrier.**Communication**

Communication	13 12 029 000			0..9	-
<b>identifier</b> Identifier	13 12 029 015 an..512	-		O	-
<b>type</b> Type	13 12 029 002 an..3	361COM	O		-

ENSRSP.QueryResponse.Declaration.Consignment.HouseConsignment.**NotifyParty**

Notify party	13 13 000 000		0..1	-
<b>typeOfPerson</b>	13 13 028 000 an1	374COM	O	-
Type of person				
<b>name</b>	13 13 016 000 an..70	-	O	-
Name				
<b>identificationNumber</b>	13 13 017 000 an..17	-	O	-
Identification number				
<b>aeoStatus</b>	- an..4	357COM	O	-
AEO status				

ENSRSP.QueryResponse.Declaration.Consignment.HouseConsignment.NotifyParty.**Address**

Notify party address	13 13 018 000		0..1	-
<b>street</b>	13 13 018 023 an..70	-	O	-
Street				
<b>streetAdditionalLine</b>	13 13 018 024 an..70	-	O	-
Street				
<b>number</b>	13 13 018 025 an..35	-	O	-
Number				
<b>poBox</b>	13 13 018 026 an..70	-	O	-
P.O. box				
<b>postcode</b>	13 13 018 021 an..17	-	O	-
Postcode				
<b>city</b>	13 13 018 022 an..35	-	O	-
City				
<b>subDivision</b>	13 13 018 027 an..35	-	O	-
Sub-division				
<b>country</b>	13 13 018 020 an2	356COM	O	-
Country code				

ENSRSP.QueryResponse.Declaration.Consignment.HouseConsignment.NotifyParty.**Communication**

Communication	13 13 029 000			0..9	-
<b>identifier</b> Identifier	13 13 029 015	an..512	-	0	-
<b>type</b> Type	13 13 029 002	an..3	361COM	0	-

ENSRSP.QueryResponse.Declaration.Consignment.HouseConsignment.**AdditionalSupplyChainActor**

Additional supply chain actor	13 14 000 000			0..99	-
<b>name</b> Name	-	an..70	-	0	-
<b>role</b> Role	13 14 031 000	an..3	360COM	0	-
<b>identificationNumber</b> Identification number	13 14 017 000	an..17	-	0	-
<b>aeoStatus</b> AEO status	-	an..4	357COM	0	-

ENSRSP.QueryResponse.Declaration.Consignment.HouseConsignment.AdditionalSupplyChainActor.**Address**

Additional's supply chain actor address	-			0..1	-
<b>street</b> Street	-	an..70	-	0	-
<b>streetAdditionalLine</b> Street	-	an..70	-	0	-
<b>number</b> Number	-	an..35	-	0	-

<b>poBox</b> P.O. box	-	an..70	-	O	-
<b>postcode</b> Postcode	-	an..17	-	O	-
<b>city</b> City	-	an..35	-	O	-
<b>subDivision</b> Sub-division	-	an..35	-	O	-
<b>country</b> Country code	-	an2	356COM	O	-

ENSRSP.QueryResponse.Declaration.Consignment.HouseConsignment.SupplementaryDeclarant

Supplementary declarant	13 15 000 000			0..99	-
-------------------------	---------------	--	--	-------	---

<b>name</b> Name	-	an..70	-	O	-
<b>identificationNumber</b> Identification number	13 15 017 000	an..17	-	O	-
<b>supplementaryFilingType</b> Supplementary filing type	13 15 032 000	an..3	-	O	-
<b>aeoStatus</b> AEO status	-	an..4	357COM	O	-

ENSRSP.QueryResponse.Declaration.Consignment.HouseConsignment.SupplementaryDeclarant.Address

Supplementary declarant's address	-			0..1	-
-----------------------------------	---	--	--	------	---

<b>street</b> Street	-	an..70	-	O	-
<b>streetAdditionalLine</b> Street	-	an..70	-	O	-



<b>number</b>	-	an..35	-	O	-
Number					
<b>poBox</b>	-	an..70	-	O	-
P.O. box					
<b>postcode</b>	-	an..17	-	O	-
Postcode					
<b>city</b>	-	an..35	-	O	-
City					
<b>subDivision</b>	-	an..35	-	O	-
Sub-division					
<b>country</b>	-	an2	356COM	O	-
Country code					

ENSRSP.QueryResponse.Declaration.Consignment.HouseConsignment.**AdditionalFiscalReference**

Additional fiscal reference	13 16 000 000			0..1	-
-----------------------------	---------------	--	--	------	---

<b>role</b>	13 16 031 000	an3	398COM	O	-
Role					

<b>vatIdentificationNumber</b>	13 16 034 000	an..17	-	O	-
VAT identification number					

ENSRSP.QueryResponse.Declaration.Consignment.HouseConsignment.**TransportCharges**

Transport charges	14 02 000 000			0..1	-
-------------------	---------------	--	--	------	---

<b>methodOfPayment</b>	14 02 038 000	an1	395COM	O	-
Method of payment					

ENSRSP.QueryResponse.Declaration.Consignment.HouseConsignment.**AdditionsAndDeductions**

Additions and deductions	14 04 000 000			0..1	-
<b>currency</b>	-	an3	393COM	O	-
Currency					
<b>amount</b>	14 04 014 000	n..16,2	-	O	-
Amount					

ENSRSP.QueryResponse.Declaration.Consignment.HouseConsignment.**PostalCharges**

Postal charges	14 13 000 000			0..1	-
<b>currency</b>	14 13 012 000	an3	393COM	O	-
Currency					
<b>amount</b>	14 13 014 000	n..16,2	-	O	-
Amount					

ENSRSP.QueryResponse.Declaration.Consignment.HouseConsignment.**PlaceOfDelivery**

Place of delivery	16 05 000 000			0..1	-
<b>unLocode</b>	16 05 036 000	an..17	353COM	O	-
UN/LOCODE					
<b>country</b>	16 05 020 000	an2	356COM	O	-
Country					
<b>location</b>	16 05 037 000	an..35	-	O	-
Location					

ENSRSP.QueryResponse.Declaration.Consignment.HouseConsignment.**CountryOfRoutingOfConsignment**

Country of routing of consignment	16 12 000 000			0..99	-
<b>sequenceNumber</b>	-	n..5	-	O	-
Sequence number					

<b>country</b>	16 12 020 000 an2	356COM	O	-
Country				

ENSRSP.QueryResponse.Declaration.Consignment.HouseConsignment.**PlaceOfAcceptance**

Place of acceptance	16 16 000 000		0..1	-
---------------------	---------------	--	------	---

<b>unLocode</b>	16 16 036 000 an..17	353COM	O	-
UN/LOCODE				

<b>country</b>	16 16 020 000 an2	356COM	O	-
Country				

<b>location</b>	16 16 037 000 an..35	-	O	-
Location				

ENSRSP.QueryResponse.Declaration.Consignment.HouseConsignment.**TransportEquipment**

Transport Equipment	19 07 000 000		0..9999	-
---------------------	---------------	--	---------	---

<b>containerIdentificationNumber</b>	19 07 063 000 an..17	-	O	-
Container identification number				

<b>containerSizeAndType</b>	19 07 064 000 an..10	364COM	O	-
Container size and type identification				

<b>containerPackedStatus</b>	19 07 065 000 an..3	363COM	O	-
Container packed status				

<b>containerSupplierType</b>	19 07 066 000 an..3	365COM	O	-
Container supplier type code				

<b>numberOfSeals</b>	19 10 068 000 n..4	-	O	-
Number of seals				

ENSRSP.QueryResponse.Declaration.Consignment.HouseConsignment.TransportEquipment.Seal

Seal	19 10 000 000			0..99	-
<b>identifier</b>	19 10 015 000	an..20	-	0	-
Identifier					

ENSRSP.QueryResponse.Declaration.Consignment.HouseConsignment.PassiveBorderTransportMeans

Passive border transport means	19 09 000 000			0..99	-
<b>typeOfIdentification</b>	19 09 061 000	an2	387COM	0	-
Type of identification					
<b>identificationNumber</b>	19 09 017 000	an..35	-	0	-
Identification number					
<b>nationality</b>	19 09 062 000	an2	356COM	0	-
Nationality					
<b>typeOfMeansOfTransport</b>	19 09 067 000	an..4	396COM	0	-
Type of means of transport					

ENSRSP.QueryResponse.Declaration.Consignment.HouseConsignment.Receptacle

Receptacle	-			0..9999	-
<b>receptacleIdentificationNumber</b>	19 11 000 000	an..35	-	0	-
Receptacle identification number					

ENSRSP.QueryResponse.Declaration.Consignment.HouseConsignment.GoodsShipment

Goods shipment data level	-			0..1	-
<b>mrn</b>	-	an..35	-	0	-
MRN					
Master Reference Number (MRN)					

ENSRSP.QueryResponse.Declaration.Consignment.HouseConsignment.GoodsShipment.**Seller**

Seller	13 08 000 000		0..1	-
<b>typeOfPerson</b>	13 08 028 000 an1	374COM	O	-
Type of person				
<b>name</b>	13 08 016 000 an..70	-	O	-
Name				
<b>identificationNumber</b>	13 08 017 000 an..17	-	O	-
Identification number				
<b>aeoStatus</b>	- an..4	357COM	O	-
AEO status				

ENSRSP.QueryResponse.Declaration.Consignment.HouseConsignment.GoodsShipment.**Seller.Address**

Seller's address	13 08 018 000		0..1	-
<b>street</b>	13 08 018 023 an..70	-	O	-
Street				
<b>streetAdditionalLine</b>	13 08 018 024 an..70	-	O	-
Street				
<b>number</b>	13 08 018 025 an..35	-	O	-
Number				
<b>poBox</b>	13 08 018 026 an..70	-	O	-
P.O. box				
<b>postcode</b>	13 08 018 021 an..17	-	O	-
Postcode				
<b>city</b>	13 08 018 022 an..35	-	O	-
City				
<b>subDivision</b>	13 08 018 027 an..35	-	O	-
Sub-division				

<b>country</b>	13 08 018 020 an2	356COM	O	-
Country code				

ENSRSP.QueryResponse.Declaration.Consignment.HouseConsignment.GoodsShipment.S  
eller.**Communication**

Communication	13 08 029 000		0..9	-
---------------	---------------	--	------	---

<b>identifier</b>	13 08 029 015 an..512	-	O	-
Identifier				

<b>type</b>	13 08 029 002 an..3	361COM	O	-
Type				

ENSRSP.QueryResponse.Declaration.Consignment.HouseConsignment.GoodsShipment.**B  
uyer**

Buyer	13 09 000 000		0..1	-
-------	---------------	--	------	---

<b>typeOfPerson</b>	13 09 028 000 an1	374COM	O	-
Type of person				

<b>name</b>	13 09 016 000 an..70	-	O	-
Name				

<b>identificationNumber</b>	13 09 017 000 an..17	-	O	-
Identification number				

<b>aeoStatus</b>	-	an..4	357COM	O	-
AEO status					

ENSRSP.QueryResponse.Declaration.Consignment.HouseConsignment.GoodsShipment.B  
uyer.**Address**

Buyer's address	13 09 018 000		0..1	-
-----------------	---------------	--	------	---

<b>street</b>	13 09 018 023 an..70	-	O	-
Street				

<b>streetAdditionalLine</b>	13 09 018 024 an..70	-	O	-
Street				

<b>number</b> Number	13 09 018 025 an..35	-	O	-
<b>poBox</b> P.O. box	13 09 018 026 an..70	-	O	-
<b>postcode</b> Postcode	13 09 018 021 an..17	-	O	-
<b>city</b> City	13 09 018 022 an..35	-	O	-
<b>subDivision</b> Sub-division	13 09 018 027 an..35	-	O	-
<b>country</b> Country code	13 09 018 020 an2	356COM	O	-

ENSRSP.QueryResponse.Declaration.Consignment.HouseConsignment.GoodsShipment.Buyer.**Communication**

Communication	13 09 029 000		0..9	-
---------------	---------------	--	------	---

<b>identifier</b> Identifier	13 09 029 015 an..512	-	O	-
<b>type</b> Type	13 09 029 002 an..3	361COM	O	-

ENSRSP.QueryResponse.Declaration.Consignment.HouseConsignment.**HouseConsignmentItem**

House Consignment Goods Item level	-		0..9999	-
------------------------------------	---	--	---------	---

<b>goodsItemNumber</b> Goods item number	11 03 000 000 n..5	-	O	-
<b>invoiceCurrency</b> Invoice currency	14 05 000 000 an3	393COM	O	-
<b>itemAmountInvoiced</b> Item amount invoiced	14 08 000 000 n..16,2	-	O	-

<b>countryOfOrigin</b> Country of origin code	16 08 000 000 an2	356COM	O	-
<b>netMass</b> Net mass	18 01 000 000 n..16,6	-	O	-
<b>grossMass</b> Gross mass	18 04 000 000 n..16,6	-	O	-
<b>descriptionOfGoods</b> Description of goods	18 05 000 000 an..512	-	O	-
<b>cusCode</b> CUS code	18 08 000 000 an9	-	O	-
<b>typeOfGoods</b> Type of goods	18 10 000 000 an..3	388COM	O	-

ENSRSP.QueryResponse.Declaration.Consignment.HouseConsignment.HouseConsignmentItem.**AdditionalInformation**

Additional information	12 02 000 000		0..99	-
------------------------	---------------	--	-------	---

<b>code</b> Code	12 02 008 000 an5	358COM	O	-
<b>text</b> Text	12 02 009 000 an..512	-	O	-

ENSRSP.QueryResponse.Declaration.Consignment.HouseConsignment.HouseConsignmentItem.**SupportingDocument**

Supporting document	12 03 000 000		0..99	-
---------------------	---------------	--	-------	---

<b>referenceNumber</b> Reference number	12 03 001 000 an..70	-	O	-
<b>type</b> Type	12 03 002 000 an4	351COM	O	-



ENSRSP.QueryResponse.Declaration.Consignment.HouseConsignment.HouseConsignmentItem.**AdditionalSupplyChainActor**

Additional supply chain actor	13 14 000 000		0..99	-
<b>name</b> Name	-	an..70	-	O -
<b>role</b> Role	13 14 031 000	an..3	360COM	O -
<b>identificationNumber</b> Identification number	13 14 017 000	an..17	-	O -
<b>aeoStatus</b> AEO status	-	an..4	357COM	O -

ENSRSP.QueryResponse.Declaration.Consignment.HouseConsignment.HouseConsignmentItem.**AdditionalSupplyChainActor.Address**

Additional's supply chain actor address	-		0..1	-
<b>street</b> Street	-	an..70	-	O -
<b>streetAdditionalLine</b> Street	-	an..70	-	O -
<b>number</b> Number	-	an..35	-	O -
<b>poBox</b> P.O. box	-	an..70	-	O -
<b>postcode</b> Postcode	-	an..17	-	O -
<b>city</b> City	-	an..35	-	O -
<b>subDivision</b> Sub-division	-	an..35	-	O -

<b>country</b>	-	an2	356COM	O	-
Country code					

ENSRSP.QueryResponse.Declaration.Consignment.HouseConsignment.HouseConsignmentItem.**PostalValue**

Postal value	14 12 000 000			0..1	-
--------------	---------------	--	--	------	---

<b>currency</b>	14 12 012 000	an3	393COM	O	-
Currency					

<b>amount</b>	14 12 014 000	n..16,2	-	O	-
Amount					

ENSRSP.QueryResponse.Declaration.Consignment.HouseConsignment.HouseConsignmentItem.**Packaging**

Packaging	18 06 000 000			0..99	-
-----------	---------------	--	--	-------	---

<b>typeOfPackages</b>	18 06 003 000	an2	352COM	O	-
Type of packages					

<b>numberOfPackages</b>	18 06 004 000	n..8	-	O	-
Number of packages					

<b>shippingMarks</b>	18 06 054 000	an..512	-	O	-
Shipping marks					

ENSRSP.QueryResponse.Declaration.Consignment.HouseConsignment.HouseConsignmentItem.**DangerousGoods**

Dangerous goods	18 07 000 000			0..99	-
-----------------	---------------	--	--	-------	---

<b>unNumber</b>	18 07 055 000	an4	400COM	O	-
UN Number					

ENSRSP.QueryResponse.Declaration.Consignment.HouseConsignment.HouseConsignmentItem.**CommodityCode**

Commodity code	18 09 000 000			0..1	-
----------------	---------------	--	--	------	---

<b>harmonisedSystemSubheadingCode</b>	18 09 056 000 an6	-		O	-
---------------------------------------	-------------------	---	--	---	---

Harmonized System sub-heading code

<b>combinedNomenclatureCode</b>	18 09 057 000 an2	-		O	-
---------------------------------	-------------------	---	--	---	---

Combined nomenclature code

ENSRSP.QueryResponse.Declaration.Consignment.HouseConsignment.HouseConsignmentItem.**TransportEquipment**

Transport Equipment	19 07 000 000			0..9999	-
---------------------	---------------	--	--	---------	---

<b>containerIdentificationNumber</b>	19 07 063 000 an..17	-		O	-
--------------------------------------	----------------------	---	--	---	---

Container identification number

<b>containerSizeAndType</b>	19 07 064 000 an..10	364COM	O		-
-----------------------------	----------------------	--------	---	--	---

Container size and type identification

<b>containerPackedStatus</b>	19 07 065 000 an..3	363COM	O		-
------------------------------	---------------------	--------	---	--	---

Container packed status

<b>containerSupplierType</b>	19 07 066 000 an..3	365COM	O		-
------------------------------	---------------------	--------	---	--	---

Container supplier type code

<b>numberOfSeals</b>	19 10 068 000 n..4	-		O	-
----------------------	--------------------	---	--	---	---

Number of seals

ENSRSP.QueryResponse.Declaration.Consignment.HouseConsignment.HouseConsignmentItem.TransportEquipment.**Seal**

Seal	19 10 000 000			0..99	-
------	---------------	--	--	-------	---

<b>identifier</b>	19 10 015 000 an..20	-		O	-
-------------------	----------------------	---	--	---	---

Identifier

ENSRSP.QueryResponse.Declaration.Consignment.HouseConsignment.HouseConsignmentItem.**PassiveBorderTransportMeans**

Passive border transport means	19 09 000 000		0..999	-
--------------------------------	---------------	--	--------	---

<b>typeOfIdentification</b> Type of identification	19 09 061 000 an2	387COM	O	-
---	-------------------	--------	---	---

<b>identificationNumber</b> Identification number	19 09 017 000 an..35	-	O	-
--	----------------------	---	---	---

<b>nationality</b> Nationality	19 09 062 000 an2	356COM	O	-
-----------------------------------	-------------------	--------	---	---

<b>typeOfMeansOfTransport</b> Type of means of transport	19 09 067 000 an..4	396COM	O	-
---	---------------------	--------	---	---

ENSRSP.QueryResponse.Declaration.Consignment.**ConsignmentItem**

Master Consignment Goods Item level	-		0..9999	-
-------------------------------------	---	--	---------	---

<b>goodsItemNumber</b> Goods item number	11 03 000 000 n..5	-	O	-
---	--------------------	---	---	---

<b>grossMass</b> Gross mass	18 04 000 000 n..16,6	-	O	-
--------------------------------	-----------------------	---	---	---

<b>descriptionOfGoods</b> Description of goods	18 05 000 000 an..512	-	O	-
---	-----------------------	---	---	---

<b>cusCode</b> CUS code	18 08 000 000 an9	-	O	-
----------------------------	-------------------	---	---	---

ENSRSP.QueryResponse.Declaration.Consignment.ConsignmentItem.**AdditionalInformation**

Additional information	12 02 000 000		0..99	-
------------------------	---------------	--	-------	---

<b>code</b> Code	12 02 008 000 an5	358COM	O	-
---------------------	-------------------	--------	---	---

<b>text</b> Text	12 02 009 000 an..512	-	O	-
---------------------	-----------------------	---	---	---

ENSRSP.QueryResponse.Declaration.Consignment.ConsignmentItem.**SupportingDocument**

Supporting document	12 03 000 000			0..99	-
<b>referenceNumber</b>	12 03 001 000	an..70	-	O	-
Reference number					
<b>type</b>	12 03 002 000	an4	351COM	O	-
Type					

ENSRSP.QueryResponse.Declaration.Consignment.ConsignmentItem.**AdditionalSupplyChainActor**

Additional supply chain actor	13 14 000 000			0..99	-
<b>name</b>	-	an..70	-	O	-
Name					
<b>role</b>	13 14 031 000	an..3	360COM	O	-
Role					
<b>identificationNumber</b>	13 14 017 000	an..17	-	O	-
Identification number					
<b>aeoStatus</b>	-	an..4	357COM	O	-
AEO status					

ENSRSP.QueryResponse.Declaration.Consignment.ConsignmentItem.AdditionalSupplyChainActor.**Address**

Additional's supply chain actor address	-			0..1	-
<b>street</b>	-	an..70	-	O	-
Street					
<b>streetAdditionalLine</b>	-	an..70	-	O	-
Street					
<b>number</b>	-	an..35	-	O	-
Number					

<b>poBox</b> P.O. box	-	an..70	-	O	-
<b>postcode</b> Postcode	-	an..17	-	O	-
<b>city</b> City	-	an..35	-	O	-
<b>subDivision</b> Sub-division	-	an..35	-	O	-
<b>country</b> Country code	-	an2	356COM	O	-

ENSRSP.QueryResponse.Declaration.Consignment.ConsignmentItem.**Packaging**

Packaging	18 06 000 000			0..99	-
<b>typeOfPackages</b> Type of packages	18 06 003 000	an2	352COM	O	-
<b>numberOfPackages</b> Number of packages	18 06 004 000	n..8	-	O	-
<b>shippingMarks</b> Shipping marks	18 06 054 000	an..512	-	O	-

ENSRSP.QueryResponse.Declaration.Consignment.ConsignmentItem.**DangerousGoods**

Dangerous goods	18 07 000 000			0..99	-
<b>unNumber</b> UN Number	18 07 055 000	an4	400COM	O	-

ENSRSP.QueryResponse.Declaration.Consignment.ConsignmentItem.**CommodityCode**

Commodity code	18 09 000 000			0..1	-
<b>harmonisedSystemSubheadingCode</b> Harmonized System sub-heading code	18 09 056 000	an6	-	O	-

<b>combinedNomenclatureCode</b>	18 09 057 000 an2	-	O	-
Combined nomenclature code				

ENSRSP.QueryResponse.Declaration.Consignment.ConsignmentItem.**TransportEquipment**

Transport Equipment	19 07 000 000		0..9999	-
---------------------	---------------	--	---------	---

<b>containerIdentificationNumber</b>	19 07 063 000 an..17	-	O	-
Container identification number				

<b>containerSizeAndType</b>	19 07 064 000 an..10	364COM	O	-
Container size and type identification				

<b>containerPackedStatus</b>	19 07 065 000 an..3	363COM	O	-
Container packed status				

<b>containerSupplierType</b>	19 07 066 000 an..3	365COM	O	-
Container supplier type code				

<b>numberOfSeals</b>	19 10 068 000 n..4	-	O	-
Number of seals				

ENSRSP.QueryResponse.Declaration.Consignment.ConsignmentItem.TransportEquipment.**Seal**

Seal	19 10 000 000		0..99	-
------	---------------	--	-------	---

<b>identifier</b>	19 10 015 000 an..20	-	O	-
Identifier				

ENSRSP.**QueryRequester**

Query Requester	-		1	-
-----------------	---	--	---	---

<b>identificationNumber</b>	-	an..17	-	R	<a href="#">R790LT</a> <a href="#">R812LT</a>
Identification number					

#### ENSRSP.Error

Functional error	-			0..99	<a href="#">R811LT</a>
------------------	---	--	--	-------	------------------------

---

<b>sequenceNumber</b>	-	n..5	-	R	<a href="#">R789LT</a>
-----------------------	---	------	---	---	------------------------

Sequence number

<b>pointer</b>	-	an..512	-	R	<a href="#">R780LT</a>
----------------	---	---------	---	---	------------------------

Pointer

Pointer to the place where error occurred.

<b>code</b>	-	an..2	45LT_49	R	-
-------------	---	-------	---------	---	---

Code

Code of error

<b>reason</b>	-	an..10	-	O	<a href="#">R780LT</a>
---------------	---	--------	---	---	------------------------

Reason

Identifier of rule which produced error.

<b>originalAttribute</b>	-	an..512	-	O	<a href="#">R780LT</a>
--------------------------	---	---------	---	---	------------------------

Original attribute

Original value the error concerns.

<b>description</b>	-	an..1024	-	O	<a href="#">R780LT</a>
--------------------	---	----------	---	---	------------------------

Description

Error description.

<b>source</b>	-	an..20	243NOV	O	-
---------------	---	--------	--------	---	---

Source

Code of error source (i.e., code of system or process in the system).

#### ENSRSP.Signature

Digital signature	-			0..1	-
-------------------	---	--	--	------	---

See chapter "Digital signature".

---



## 3.3 Rules

### R780LT

#SchemaValidated

Value of this data item (free text item) cannot:

- be empty,
- contain only white spaces (like spaces, tabulators),
- contain white spaces at the beginning or at the end of the text.

---

*Value of this data item cannot be empty.*

### R783LT

#SchemaValidated

messageIdentification data item cannot be empty and may contain only the following characters:

'0-9', 'A-Z', 'a-z', '- '.

---

*Message identification data item cannot be empty and may contain only the following characters:*

*'0-9', 'A-Z', 'a-z', '- '.*

### R784LT

#Contextual

messageIdentification data item must be unique among messages of the same type sent to the system by the same sender (identified by identificationNumber pointed by the messageSender data item).

---

*Message identification data item must be unique among messages of the same type sent to the system by the same sender (identified by identification number pointed by the message sender data item).*

### R785LT

#SchemaValidated

Possible XPath values of this data item are defined by enumerations in particular schema definitions e.g., /IEG347/Notification/PersonPresentingGoods/identificationNumber.

---

*Possible values of this data item are defined in particular schema definitions.*

### R786LT

#Contextual

identificationNumber pointed by messageSender has to be provided.

---

*Message sender must be declared.*

## R788LT

There must be a valid control digit in the mrn data item.

---

*The MRN must have a valid control digit.*

## R789LT

Each sequenceNumber is unique for the Data group it belongs to. The sequence numbers shall be sequential, starting from '1' for the first iteration of the Data group and increasing by '1' for each iteration.

---

*Sequence numbers must be unique sequential numbers in collection starting from 1.*

## R790LT

#SchemaValidated

EORI/TCUIN value should comply with the following pattern: [A-Z]{2}[\x21-\x7E]{1,15}

It means:

- first two chars from the ASCII table scope "A".."Z"
- next chars (at least 1, maximum 15) from the ASCII table scope "!".."~"

---

*EORI/TCUIN value should comply with the following pattern: first two chars from "A".."Z" scope, next chars (at least 1, maximum 15) from the wider scope: "!".."~"*

## R796LT

#Contextual

The content of the message must be integral with the digital signature

---

*The content of the message must be integral with the digital signature.*

## R797LT

#Contextual

The person who signed the message must have the right to act for the sender of the message

Remarks:

- Person is identified by thumbprint of digital signature.
- Message sender is pointed by messageSender data item of the root message element.
- This rule is not relevant for messages sent from PPMKS Portal.

---

*The person who signed the message must be authorised in BAP (Common User Management Portal) to act on behalf of Declarant/Representative who sent the message.*

### R798LT

#Contextual

Signature is required for electronic communication

---

*A digital signature is required for electronic communication.*

### R810LT

IF Query.mrn is used THEN  
    Query.TransportDocument cannot be used  
ELSE  
    Query.TransportDocument is required

---

*MRN or Transport document is required for query criteria.  
MRN and TransportDocument cannot be used together for query criteria.*

### R811LT

IF ENSRSP.QueryResponse.queryResult = "ERROR" THEN  
    ENSRSP.Error is required  
ELSE  
    ENSRSP.Error cannot be used

---

*Error data are returned only when query result points to ERROR.*

### R812LT

#Contextual

QueryRequester.identificationNumber should point to one of the <trader>.identificationNumber included in ENS data.

---

*The query requester should be one of the traders included in ENS data.*